

ISSUE ③
OCT/69
RSSE 2
MAR/69

DRG NO 1.5213

GT. NOV/85

BENTLEY SERVO ASSISTED BRAKES

FEENEY & JOHNSON LTD
ALPERTON LANE
WEMBLEY

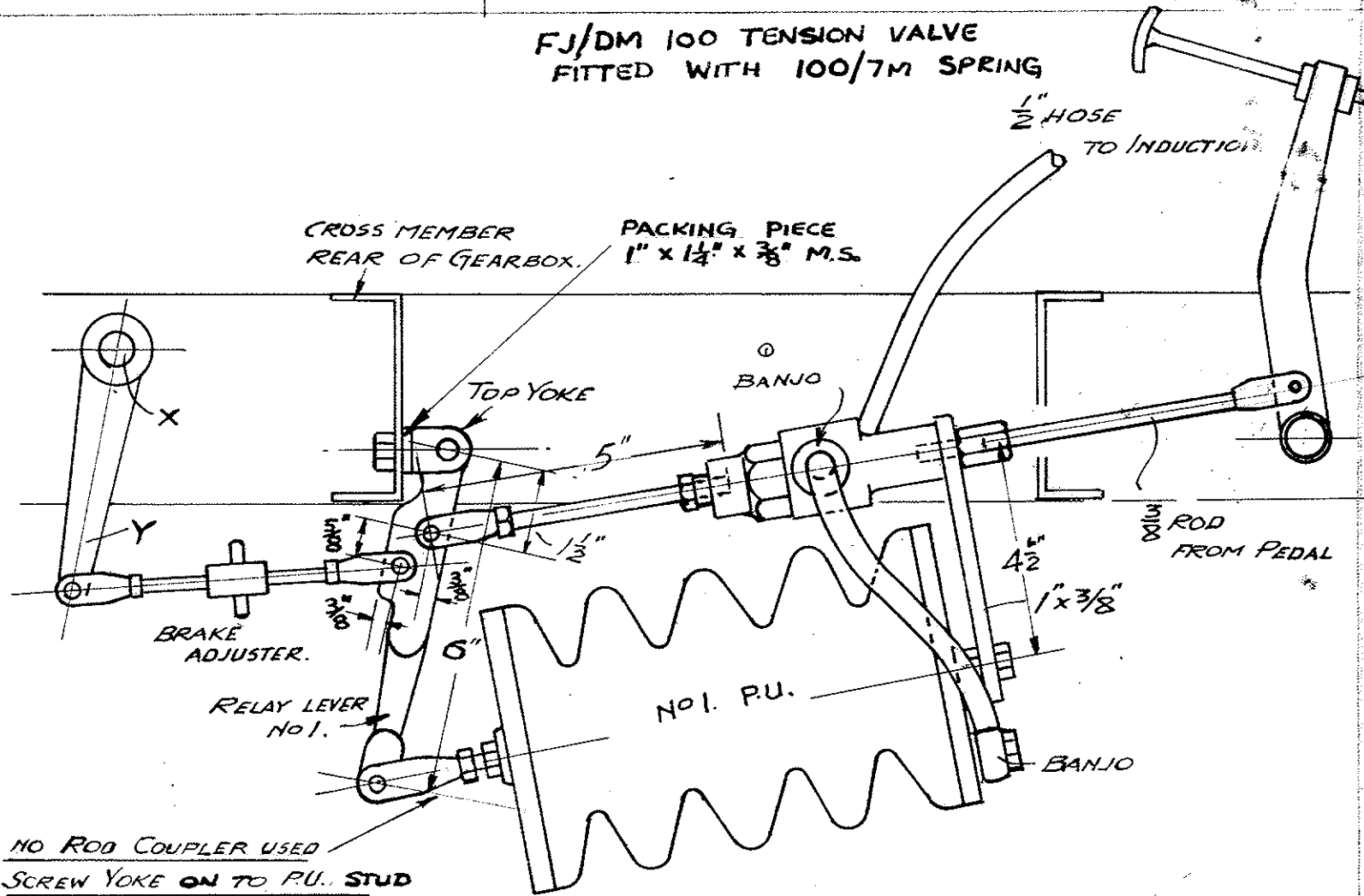
PHONE 01-998-4458

- ① WAS HOSE NIPPLE FEB 59.
- ② TENSION VALVE HAS MEDIUM SPRING.
- ③ LEVER HOLE DMS.
ADDED OCT/69.
ALSO PACKING PIECE.

COPIED FROM SB3/61. 8-5B4. 2.

THIS IS SIMILAR TO FJ 5008

FJ/DM 100 TENSION VALVE FITTED WITH 100/7M SPRING



NO ROD COUPLER USED
SCREW YOKE ON TO P.U. STUD
& USE A LOCK NUT

REMOVE ROD FROM PEDAL TO CROSS SHAFT X.

FIT TOP YOKE 'IN LINE' AS SHOWN.

SUSPEND SERVO AS SHOWN, AND CONNECT
TO LEVER Y THROUGH RELAY LEVER.

SUPPLY. 6FT. 1/2" HOSE.
4 CLIPS
1/4 GAS HOSE
NIPPLE.

NOT TO SCALE.



HAND CONTROL EQUIPMENT

Vacuum Control Valve — TENSION TYPE 333

This type of Valve is used in the F. & J. Hand Control Conversion Equipment. It is of simple construction and once fitted requires no adjustment.

THE OPERATION OF THE SERVO IS AS FOLLOWS:

When Hand Control lever is operated, the Valve is opened, thereby connecting the Power Unit to the suction in the vacuum tank. This allows the Power Unit to close up, thus operating the clutch or the brake.

The system embodying this valve is fully progressive, owing to the mechanical layout. Thus giving the driver positive control over all operations of brake or clutch.

MAINTENANCE

The airfilter may be remotely connected by hose, or as illustrated screwed into Valve— periodically it should be removed and the gauze cleaned. At the same time 2 or 3 drops of clean oil should be inserted into the Valve port, before replacing the cone.

If the Valve is not functioning correctly, remove it from the vehicle and dismantle it completely, first unscrewing the large hexagon nut and withdrawing main spindle.

Clean all parts and thoroughly dry. Renew the soft Valve seat (taking care that the flanged edge of the new seat goes on the spigot first). Replace brass washer with chamfered edge facing locknut. Lightly smear body with grease and insert spindle. Thoroughly grease spring and refit nut. Renew dust boot as necessary.

LUBRICATION

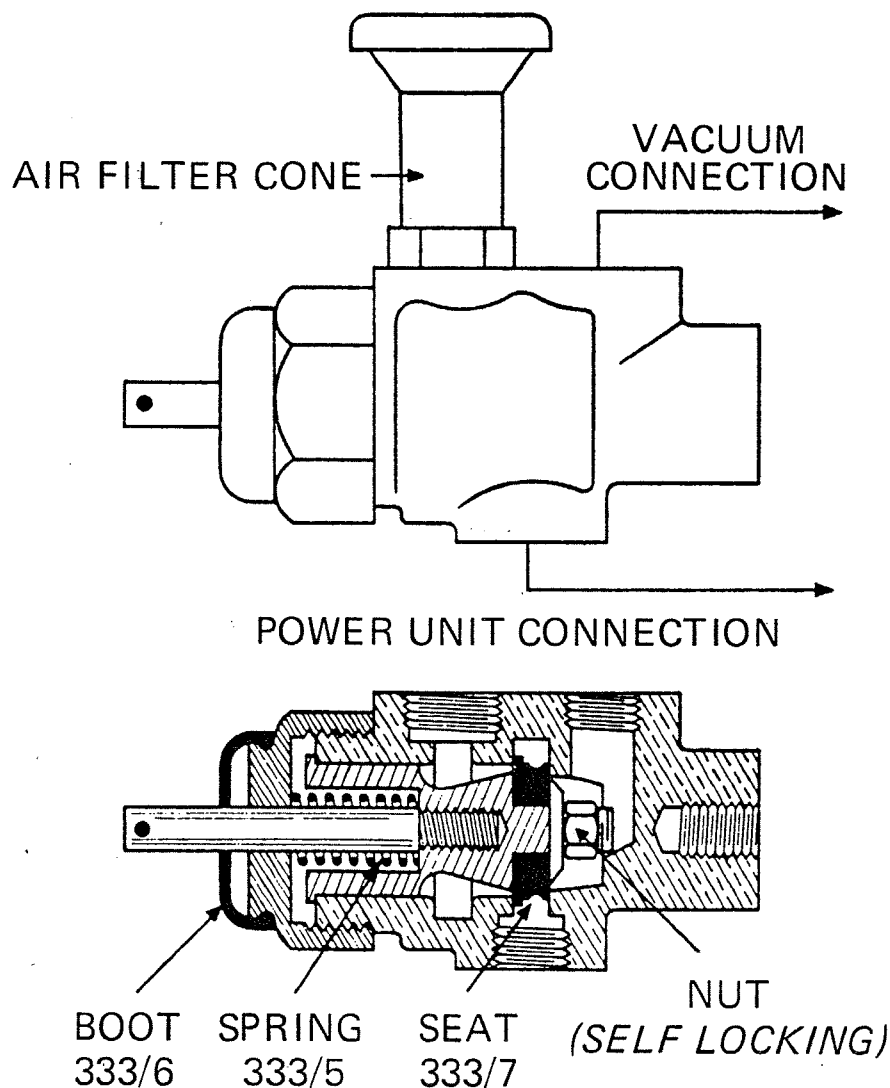
The control Valve and all swivelling joints should be lubricated with SHELL ALVANIA No. 2 Grease (in 4 oz. tubes)—**Control Cables** should be lubricated with Graphited Wax **only**.

Should the brake or clutch not function correctly, have the system checked before investigating the Hand Control Equipment.

Pipe union threads are Gas (B.S.P.)

When ordering spares, please quote part number of item and serial number stamped on the valve.

Further information is available on request and in all cases give number of Valve and type number of Power Unit.



MANUFACTURED BY **FEENY & JOHNSON LTD.**
WEMBLEY - MIDDLESEX - ENGLAND